

Step into Summer
with Astrana Health

✦. Astrana Health BROKER BULLETIN

June 2026 | OC, IE, SD

Welcome to Your Astrana Health Broker Newsletter!

Welcome to the very first edition of the Astrana Health Broker Newsletter—we're so excited to launch this new resource for our valued partner agents!

This new monthly update is designed with you in mind—keeping you informed, connected, and supported every step of the way.

Each month, you can expect highlights on upcoming broker events, featured providers within our network, member benefits and programs, and other important updates to help you better serve your clients. We're thrilled to bring you this new resource and look forward to growing together.

In this issue:

Broker News

Upcoming Events

Provider Highlights

**Meet Our Member
Engagement Team**

**Enhanced Care
Management Program**

Our New Broker Hub is LIVE



Welcome to Our Broker Hub!

We equip you with the tools, so you can provide the expertise to your clients. Find out how we can work together to build your book of business and provide your clients in the Inland Empire with high-quality, affordable health care. We welcome your partnership.

[Contact Us](#)

We are excited to announce that our **new and improved website for Alpha Care Medical Group** has launched!

Click **[here](#)** to access our brand new Broker Hub where you can learn more about the benefits of working with us, view a live calendar of our upcoming broker events, and search our online directory. **Similar updates to the Prospect Health website coming soon!**

BROKER NEWS

A SPECIAL ANNOUNCEMENT

Astrana Health is proud to announce
the acquisition of Prospect Health



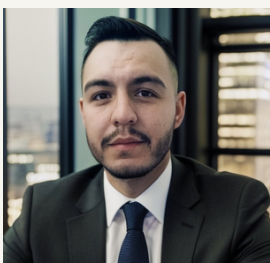
Astrana Health's acquisition of Prospect in July 2025, helped expand its network in the Inland Empire, as well as to Orange and San Diego county.

"We are excited to welcome Prospect Health's physicians, providers, and team members to Astrana Health," said our President and CEO, Brandon Sim, "Together, we will further accelerate our mission to drive consistent, coordinated, high-quality patient outcomes at scale, ultimately driving greater value across the healthcare ecosystem."

What does this mean for you and your clients?

The Alpha Care and Prospect teams have unified to become One Team in an effort to better serve our members, providers, and broker partners. This unity created the Astrana Health Southern California Team which manages the Inland Empire, San Diego, and Orange county regions. To make connecting with us more simple, you'll have **one point of contact for all regions and IPAs:**

Meet Your Broker Relations Manager




Salvador Ventura


626-720-6727

Salvador.Ventura@astranahealth.com

Scan to save
his contact!



 = Community events

 = Broker events

June 2026

UPCOMING EVENTS

JUN
1

11:00 AM
2:00 PM

SCAN - Astrana Health Broker Orientation

Virtual - via Microsoft Teams

Get an overview of our networks in LA, OC, IE, and SD, and connect with the team that can help support your business! Click [here](#) to RSVP.

JUN
6

9:00 AM
1:00 PM

Golden Future Senior Expo

San Bernardino County Edition

Double Tree Hotel Ontario

We will be tabling at this event. Come and visit our booth!

JUN
7

11:00 AM
6:00 PM

Tustin Steet Fair & Chili Cook Off

El Camino Real & W Main St

We will be tabling at this event. Come and visit our booth!

JUN
25

10:00 AM
12:00 PM

Hospital Tour & Orientation - Orange County

Foothill Regional Medical Center

We look forward to sharing valuable insights into our facilities, care model, and how we support your business. Click [here](#) to RSVP.

We are open to event collaboration!

If you would like to create an event together, or invite us to attend/sponsor one of your events, please contact our Broker Relations Manager at Salvador.Ventura@astranahealth.com

PROVIDER HIGHLIGHT

RIVERSIDE COUNTY

Martin Ahn, M.D.

Dr. Ahn received his medical degree from Kyungpook National Medical School in Korea and completed residency training at MacNeal Hospital which is affiliated with the University of Chicago, School of Medicine. Dr. Ahn has had more than 15 years of experience as a primary care physician in Southern California. He uses the most updated medical technology and evidence based medicine to ensure the accuracy of your care and provide the utmost exceptional care for his patients. Most of all, he truly and wholeheartedly cares about his patients and their family.



Office Locations

Buena Park

6301 Beach Blvd, Suite 109
Buena Park, CA 90621
(714) 525-9900

Norco

17813rd St
Norco, CA 92860
(951) 279-4900



Click [here](#) or scan the QR code for enrollment IDs!

PROVIDER HIGHLIGHT

SAN BERNARDINO COUNTY

Bhairavi Patel, M.D.

Dr. Bhairavi Patel received her medical education at Government Medical College, Surat in India and completed her residency at NYU School Of Medicine. She believes her role and purpose as a physician is to ensure her patients' optimal health and provide the necessary tools for a healthy adulthood and senior years. Dr. Patel's also values staying up-to-date about the latest developments in the field to inform her practice.

Dr. Patel has three children, including two sons and a daughter. While patient satisfaction is a top priority, she also finds joy in gardening, listening to music, practicing yoga and pilates, hiking, traveling, and dancing.



Office Locations

Apple Valley

15972 Tuscola Rd, Suite 101
Apple Valley, CA 92307
(760) 810-7631



Click [here](#) or scan the QR code for enrollment IDs!

PROVIDER HIGHLIGHT

ORANGE COUNTY

Karen Khin, M.D.

Dr. Khin is a board-certified family medicine specialist with extensive experience in outpatient primary care, urgent care, occupational medicine, and hospital medicine in Orange County. She earned her medical degree from University Institute of Medicine. She then completed her residency at St. Elizabeth Medical Center in Fullerton, California, and has been in practice for more than 25 years. Dr. Khin has expertise in treating diabetes, obesity, and hypertension, among other conditions. She dedicates herself to providing personalized care to address her patients' complex needs. She has experience with a very diverse population, and loves teaching her patients about preventive care.



Office Locations

Anaheim

500 S Anaheim Hills Rd, Ste 230
Anaheim, CA 92807
(714) 974-2820



Click [here](#) or scan the QR code for enrollment IDs!

PROVIDER HIGHLIGHT

SAN DIEGO COUNTY

Ramiz Elias, M.D.

Dr. Elias completed both his internship and residency in Upstate New York University at the Wilson Memorial Hospital and is board-certified in internal medicine. He currently operates two office locations for his clinic Contemporary Medicine.

Dr. Elias has been passionately serving San Diego residents for over 30 years. He and his staff stay committed to providing the highest quality medical care by completing regular trainings to handle the changing needs of the community. They are dedicated to providing excellent care and medical services to all of their patients in a compassionate and comfortable environment.



Office Locations

El Cajon

231 W Main St, Floor 2
El Cajon, CA 92020
(619) 631-7300

San Diego

7695 Cardinal Court, Ste 370-375
San Diego, CA 92123
(858) 384-6857



Click [here](#) or scan the QR code for enrollment IDs!

✦. Astrana Health

We provide personalized guidance for your clients

Meet Our Member Engagement Team



Fernando Lomeli

Member Engagement Manager



Yazmin Estrada

Member Engagement Specialist



Daniel Marquez

Member Engagement Specialist

Our Member Engagement Team serves as a dedicated **advocate** and **liaison** for our members — providing an extra layer of support that benefits both you and your clients. From assistance with troubleshooting appointment scheduling issues to setting up paperless referrals, our team ensures members get the answers and guidance they need quickly and efficiently. By stepping in when members need additional support, our team helps create a smoother, more positive healthcare experience — so you can feel confident your clients are well taken care of.

ENHANCED CARE MANAGEMENT

Program Objectives

Reduce unnecessary utilization by addressing clinical and behavioral needs, supporting marginalized communities, and linking them to community resources.

Care Team



Lead Care Manager



Community Health Worker



Medical Director

Outreach & Engagement



Face-to-Face



Telephone SMS



Mail



Email

Core Features



Resource Connection

Assistance with housing, food and other benefits



Medication Management

Better understand your prescriptions



Transportation Help

Help with scheduling medical transportation



Community Health Workers

Connection to community supports and programs



Appointment Assistance

Help with finding a provider and scheduling appointments



Hospital Follow-up

Outreach within 72 hours and follow-up appointments



HEDIS Care Gaps

Collaborate with Health Plan and PCP to close care gaps



Weekly Nurse Follow-up

Monitor progress towards care goals and assess abnormalities

Eligibility Criteria

- Current Managed Medi-Cal Members
- Adults with High Utilizers
- Adults with SMI/SUD and BH
- Adults at-risk for long term care



POP QUIZ!

Be the first to answer all of our
quiz corrections correctly
and win a prize on us!

Click [here](#) or scan the QR code

